

# FREETRADE



IMPOSING, ICONIC  
& STEEPED IN HISTORY



# SINCE THE VICTORIAN ERA,



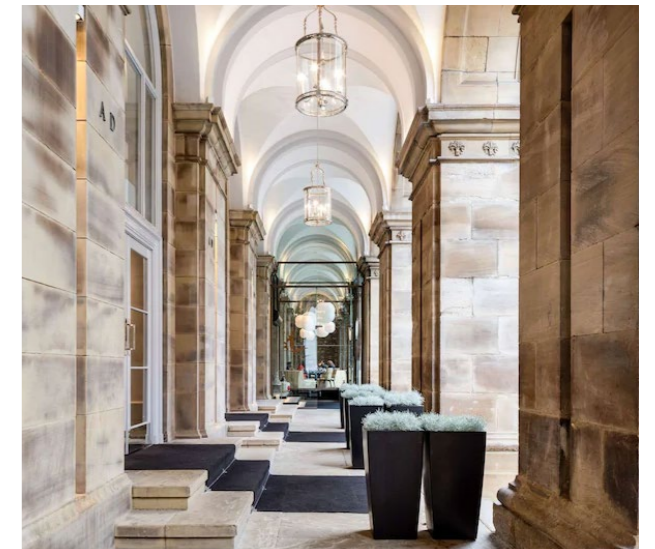
# FREETRADE HAS STOOD PROUDLY ON A CORNER OF PETER ST MANCHESTER

A building with a story

Freetrade is one of a cluster of majestic Victorian buildings that make up the civic heart of Manchester, the city's most elegant district. With its Grade two listed exterior fitting seamlessly into an urban fabric that includes the Town Hall, Central Library and Free Trade Hall.



— Opposite the iconic Freetrade Hall



Peter Street is the central spine of Manchester's commercial heart, linking the historic civic quarter of St Peter's Square with the 21st century business district of Spinningfields. Everywhere that matters to a modern business is within a five minute walk. Freetrade dates back to the Victorian era when it was filled with the colourful sights and bustling sounds of a fabric warehouse, the sensitive restoration still harks back to this illustrious time, yet carefully fuses modernity with outstanding Victorian features. Freetrade is a building of true historical interest.

# SITTING AT THE CENTRE OF EVERYTHING



Freetrade sits at the centre of everything Manchester has to offer, with a dazzling array of shopping, cafes and restaurants, museums and galleries close by. Peter Street alone boasts some of the most exciting names in Manchester's thriving hospitality scene, Rudy's Pizza, BrewDog, Albert's Schloss, Dirty Martini and the widely heralded music venue Albert Hall. Further afield, the choices expand yet further.

# MANCHESTER HAS TO OFFER



Opposite page  
Peter Street

This page  
Blue's Kitchen  
Rudy's Pizza

For overnight stays and the best in luxury treatments, choose between the five-star Radisson Edwardian hotel immediately opposite; and the place where Rolls met Royce: the Midland Hotel, with its pioneering restaurant The French.



# RUDY'S PIZZA

Petersfield House, Peter St  
Manchester M2 5QJ

# HAWKSMOOR

184 - 186 Deansgate  
Manchester M3 3WB

# DIRTY MARTINI

1 Peter St  
Manchester M2 5QR

# THE FRENCH

16 Peter St  
Manchester M60 2DS

# RIKYŪ BAR

Free Trade Hall  
Manchester M2 5GP

# NOQ64

23 Peter St  
Manchester M2 5QR

# BREWDOG

35 Peter St  
Manchester M2 5BG

# BLUES KITCHEN

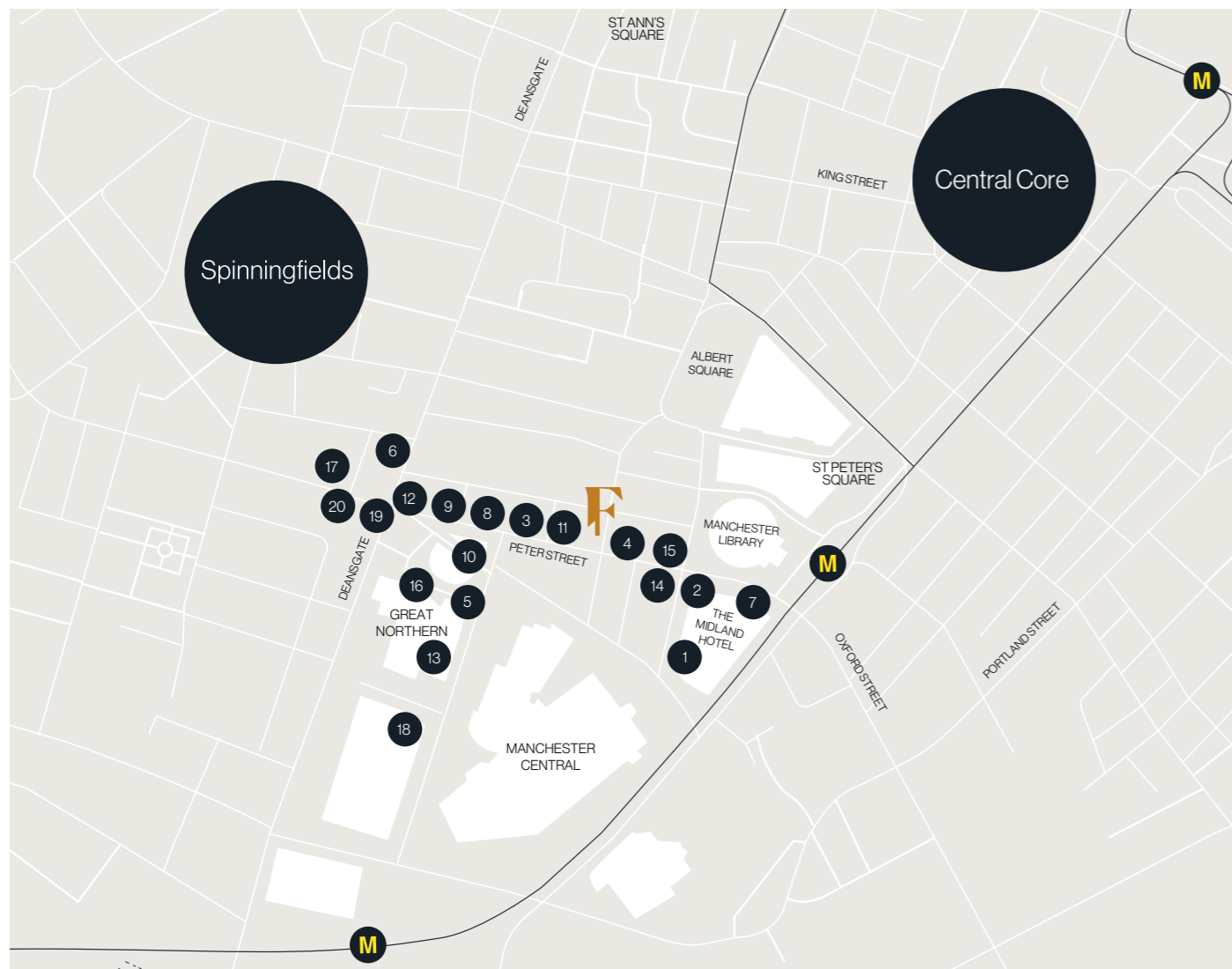
13 Quay St  
Manchester M3 3HN

# IMPOSSIBLE

36 Peter St  
Manchester M2 5QR

# EZRA & GIL

49 Peter St  
Manchester M2 3NG



- |                 |                          |
|-----------------|--------------------------|
| 1 The French    | 11 Brewdog               |
| 2 Mr Cooper's   | 12 Dirty Martini         |
| 3 Rudy's Pizza  | 15 Odeon                 |
| 4 Asha's        | 14 Cafe Nero             |
| 5 Almost Famous | 15 Starbucks             |
| 6 Hawksmoor     | 16 All Star Lanes        |
| 7 Almost Famous | 17 Bannatyne Health Club |
| 8 Hawksmoor     | 18 The Gym               |
| 9 Revs De Cuba  | 19 Sainsbury's Local     |
| 10 Impossible   | 20 Tesco Extra           |

# IN GREAT COMPANY

1



12



2

3



Concierge reception



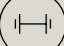







# AN INSPIRED INTERIOR

Communal business lounge



# LOOKING AFTER OUR COMMUNITY WITH BEST IN CLASS AMENITY

-  Male and Female Shower Blocks
-  Cycle Hub
-  Exclusive use of Fully-Fitted Gym
-  Sauna
-  Lockers
-  Wellness Suite with Filtered Cold or Hot Drinks
-  Drying Room
-  Yoga Studio



Private basement wellness hub





—— Top floor suite with balcony




— Impressive views of the Grade II listed Free trade Hall opposite



# 6 FLOORS OF HIGH QUALITY CONTEMPORARY WORKSPACE

- 

New Exposed Heating, Cooling and Fresh Air System



High Speed Plug and Play Fiber Connections - Up to 10GB

---


- 

LED Intelligent Lighting



Rooftop Solar Panels

---

- 

Raised Access Flooring



EPC Rating B

---

- 

Exposed Feature Columns



Two Passenger Lifts

---

- 

Fully Electric Building




On-site Shower Hub

---

- 

Occupier Engagement and Security App



Bicycle Storage Facilities

---

- 

Air Source Heat Pumps



Bike Repair Station

---

- 

Renewable Energy Sources



Living Wall and Biophilia-Inspired Reception

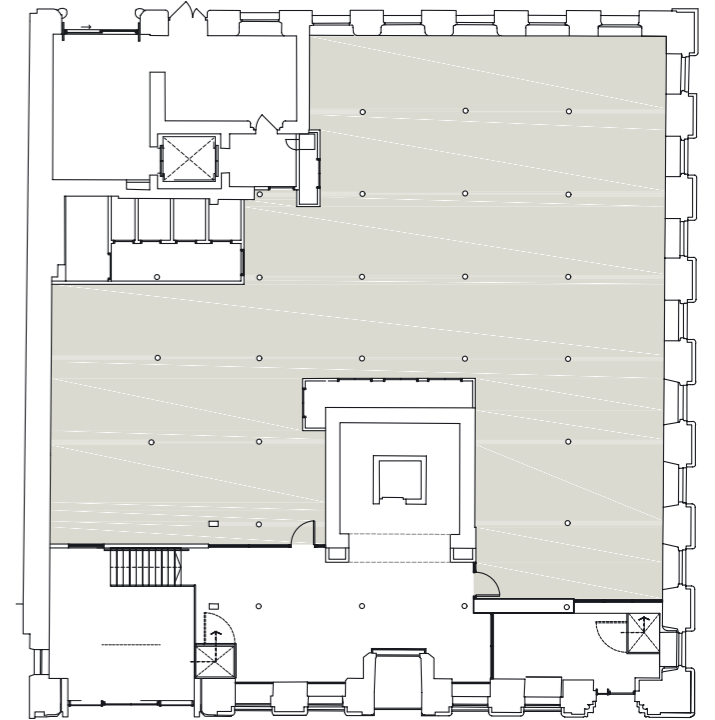
# AVAILABILITY AT FREETRADE MANCHESTER

Floor	Area sq ft	Area sq m
<b>BASEMENT</b> (GYM, SAUNA AND CHANGING FACILITIES)		
<b>GROUND</b>	3,874 sq ft	359 sq m
<b>FIRST</b>	5,347 sq ft	496 sq m
<b>SECOND</b>	5,441 sq ft	505 sq m
<b>THIRD</b>	5,428 sq ft	504 sq m
<b>FOURTH</b>	5,580 sq ft	518 sq m
<b>FIFTH</b> (WITH EXTERNAL TERRACE)	4,384 sq ft	407 sq m
<b>Total</b>	<b>30,054 sq ft</b>	<b>2,789 sq m</b>

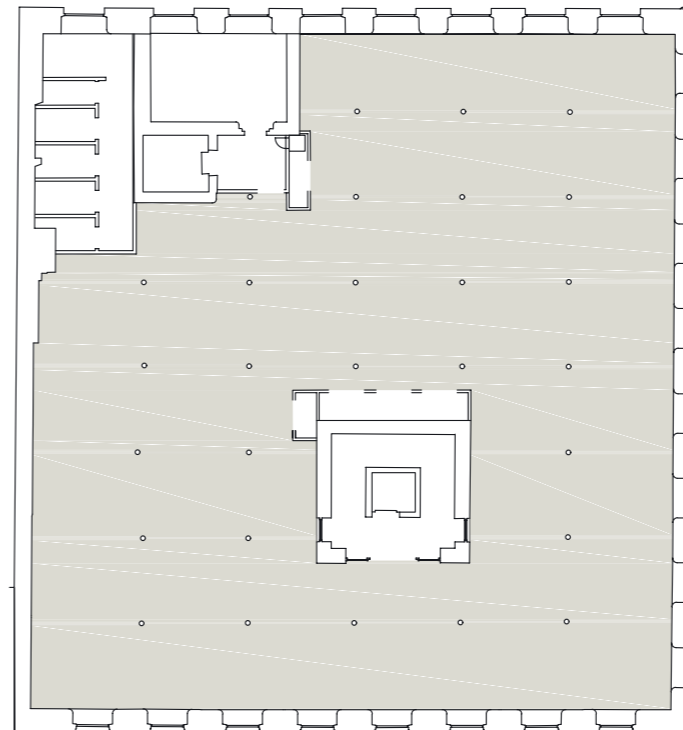
BASEMENT



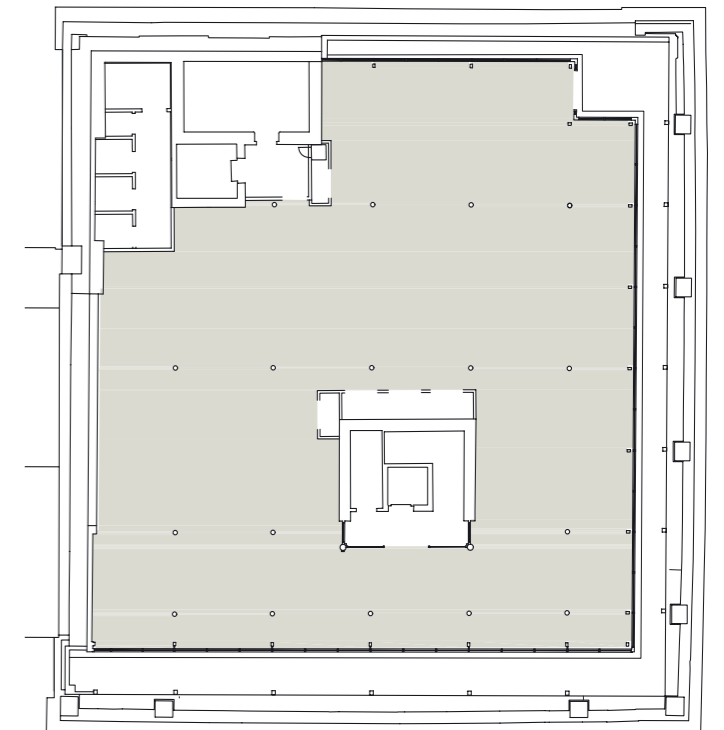
GROUND FLOOR



TYPICAL UPPER FLOOR



FIFTH FLOOR





## SECOND FLOOR FIT-OUT

(5,441 SQ FT / 505M<sup>2</sup>)

<span style="color: orange;">■</span> FORMAL WORKSPACE	52 workspaces
<span style="color: purple;">■</span> MEETING ROOMS	30 workspaces
<span style="color: yellow;">■</span> INFORMAL WORKSPACE	43 workspaces
<span style="color: green;">■</span> WCs	
<span style="color: yellow;">■</span> BREAKOUT SPACE	

Fretrade offers an unrivalled opportunity to give your business its dream office space.

# FULLY FITTED WORKSPACE



— Meeting room



Breakout space



Informal workspace



Formal workspace



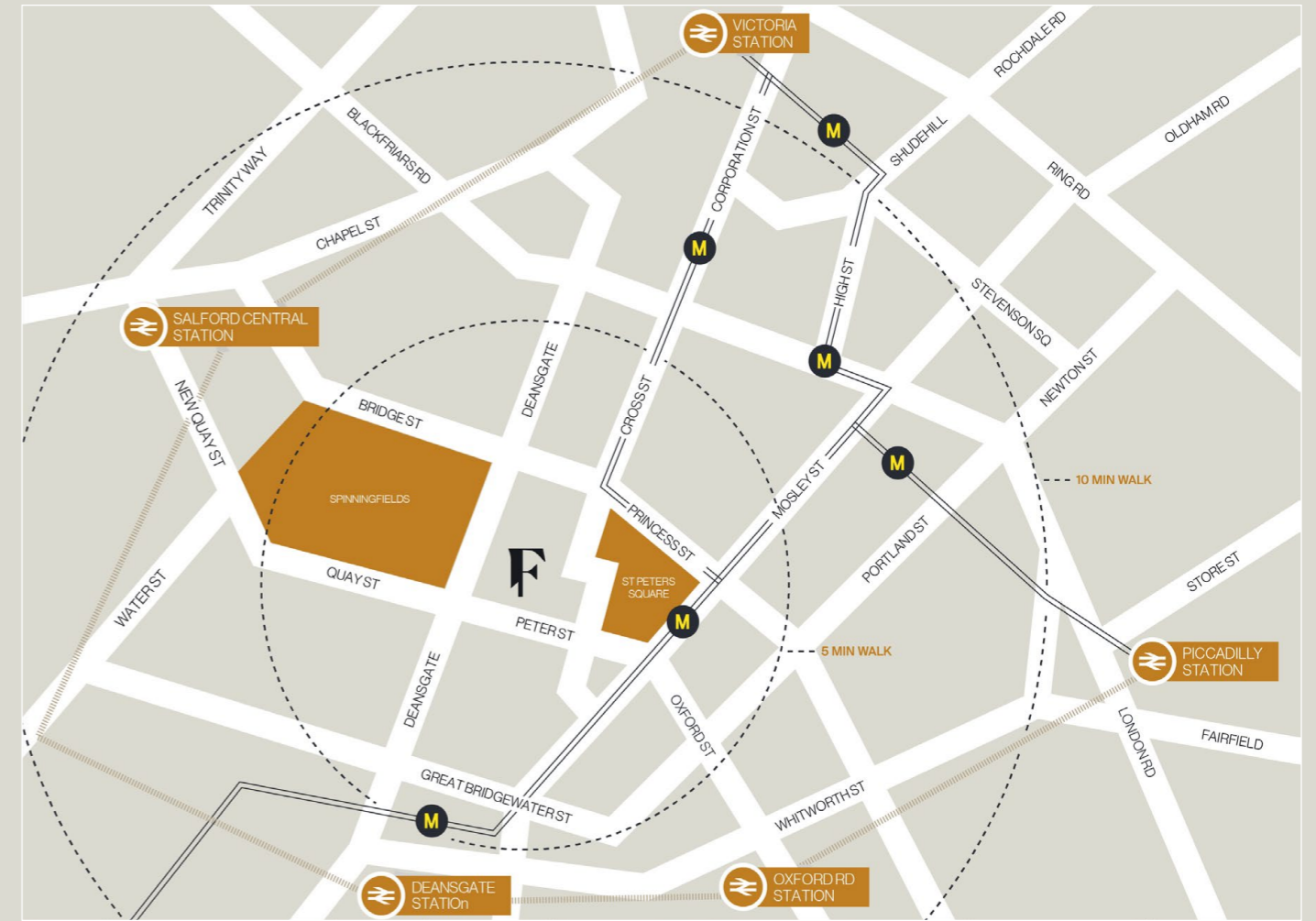
Meeting room

# PLUGGED INTO LOCAL, REGIONAL, NATIONAL & INTERNATIONAL TRANSPORT NETWORKS

Well connected

St Peter's Square and Deansgate Metrolink stations are both within a couple of minutes' walk, offering staff and visitors access to points all across Greater Manchester.

Oxford Road station is close by, while Manchester Piccadilly is a ten minute walk, with regular services to Manchester Airport, London Euston and more.



- Metrolink Stops
- Ordsall Cord
- M1 Deansgate-Castlefield
- M2 St. Peters Square
- M3 Piccadilly Gardens
- M4 Market Street
- M5 Exchange Square
- M6 Shudehill
- M7 Piccadilly Station

## Walking times

Great Northern Warehouse	2 min
St. Peter's Square / Metrolink	3 mins
Spinningfields	5 mins
First Street	7 mins
Arndale Shopping Centre	8 mins
Oxford Road Station	8 mins
Deansgate Station / Metrolink	8 mins
Piccadilly Station / Metrolink	15 mins

## Rail times

Liverpool	36 mins
Leeds	47 mins
Sheffield	50 mins
Birmingham	1hr 28 mins
London Euston	2 hrs 5 mins
Newcastle	2 hrs 18 mins
Edinburgh	3 hrs 2 mins
Glasgow	3 hrs 12 mins

## Metrolink times From Peters Sq

Piccadilly Station	3 mins
Victoria Station	7 mins
Old Trafford	11 mins
Etihad Stadium	12 mins
Media City	17 mins
Altrincham	26 mins
Manchester Airport	50 mins



# EMPHASISING SUSTAINABILITY FOR A POSITIVE IMPACT ON THE ENVIRONMENT








Clearbell are committed to the circular economy, recycling and repurposing buildings to enhance their sustainability. This ethos is at the core of our refurbishment of Freetrade. We have invested significantly in operational carbon reduction initiatives, and have created a best-in-class wellness hub within the building's basement.

The key initiatives highlighted are being undertaken to ensure the refurbishment of Freetrade has a positive impact and helps protect the natural environment.



Any business considering Freetrade as their new home can be confident in the knowledge that sustainability, health and well-being are at the core of its design.

-  Carbon Reduction Initiatives
-  Best-In-Class Wellness Hub
-  Renewable Energy Sources
-  Rooftop Solar Panels
-  EPC Rating A



Developed by  
**Clearbell**



James Devany  
+44 (0)161 238 6233  
+44 (0)7525 582901  
James.Devany@eu.jll.com



Jonathan Cook  
+44 (0)161 233 5643  
+44 (0)7702 976062  
Jonathan.Cook@cbre.com

Subject to contract.

MISREPRESENTATION ACT 1967. CBRE, JLL & for themselves and for the vendors or lessors of these properties whose agents they are, give notice that: i) The particulars are set out as a general outline only for the guidance of intending purchasers or lessees and do not constitute, nor constitute part of an offer or contract. ii) All descriptions, references to condition and necessary permission for use and occupation and other details are given in good faith and are believed to be correct, but any intending purchaser or tenant should not rely on them as statements. July 2022. Design by TileCreative.